

RD30F.1.S系列 - 封闭两侧可打开

Series of RD30F.1.S - Sealing type both side opening



闭合状态：
Opening type:

- Q** 桥式
Bridge type
- F** 全封闭式
Enclosed
- BF** 半封闭式
Semi-enclosed

注：无字母为普通型
Note: blank means general type

打开方式：
Opening way:

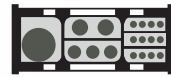
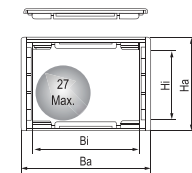
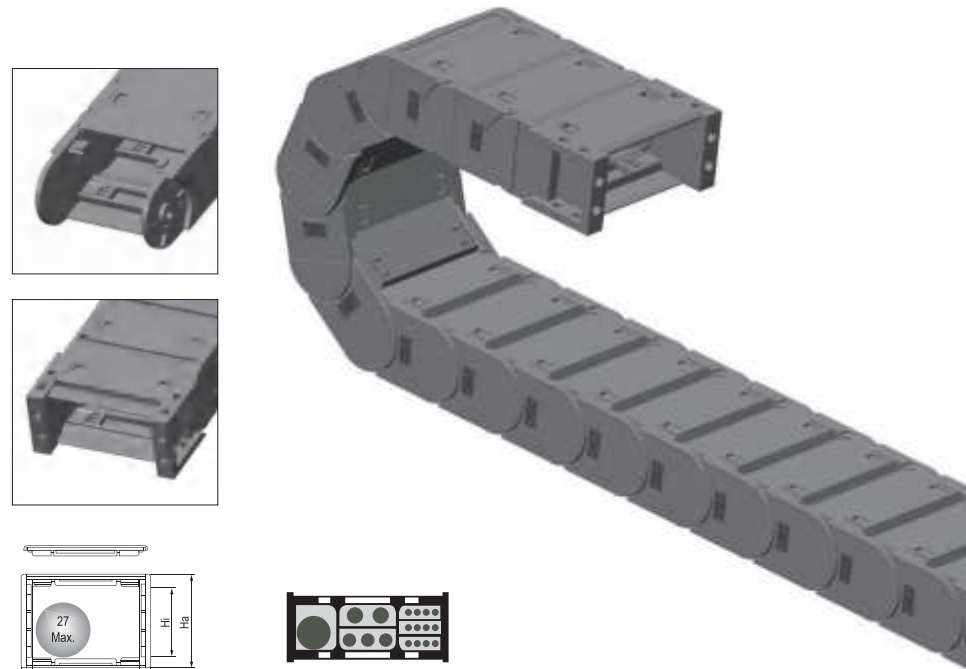
- B** 不可打开
Non-opening
- S** 双侧打开
Open of both side
- W** 外侧打开
Exterior opening
- N** 内侧打开
Interior opening
- F** 无需打开
Without opening

款式：
Style:

- Q.B** 桥式不可打开
Bridge type non-opening
- Q.N** 桥式内侧开
Bridge type interior opening
- Q.W** 桥式外侧开
Bridge type exterior opening
- Q.S** 桥式双侧可打开
Bridge type both side opening
- BF.B** 半封闭不可开
Semi-enclosed non-opening
- BF.N** 半封闭内侧开
Semi-enclosed interior opening
- BF.W** 半封闭外侧开
Semi-enclosed exterior opening
- BF.S** 半封闭双侧开
Semi-enclosed both side opening
- F.N** 封闭内侧开
Enclosed interior opening
- F.W** 封闭外侧开
Enclosed exterior opening
- F.S** 封闭双侧开
Enclosed both side opening

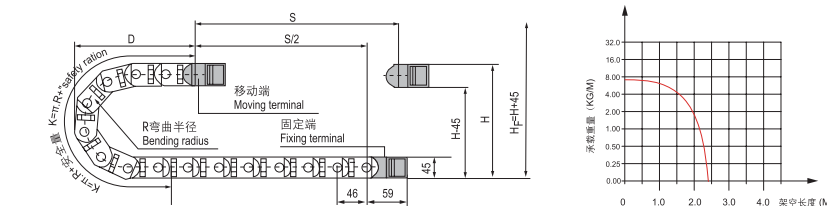
接头类型：
Bracket type:

- X** 斜型接头
Oblique bracket
- F** 方型接头
Square bracket



- ◎ The cable chain tested service life is up to 20 million times.
- ◎ The ledge of cable chain is able to open to inspect or replace cable.
- ◎ The cable chain is suitable for a diameter of 27mm or less of cable.
- ◎ 测试使用寿命达 2 千万次
- ◎ 可将拖链内外侧封闭片打开，方便检查或更换线缆
- ◎ 适用于直径 27 毫米以下线缆

主要技术参数 Basic technical data



节距=46mm, 每米节数=22, 链长=S/2+K, S=行程距离, K=π.R+“安全量”

Pitch=46mm, link per meter=22, length of chain=S/2+K, S=stroke. K=π.R+“safety ration”

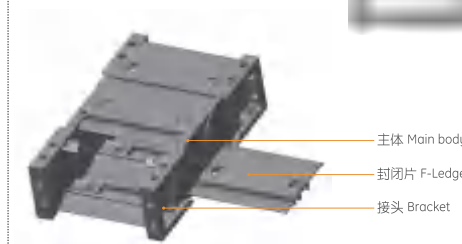
R	75	100	150
H	195	245	345
D	144	169	219
K	368	414	598

安装实际高度: H_i=H+45mm(负载 1.0kg/m)

Actual mounting height: H_i=H+45mm/load 1.0kg/m

RD30F.1.S系列 - 封闭两侧可打开 Series of RD30F.1.S-Sealing type both side opening

示意图 Drawing



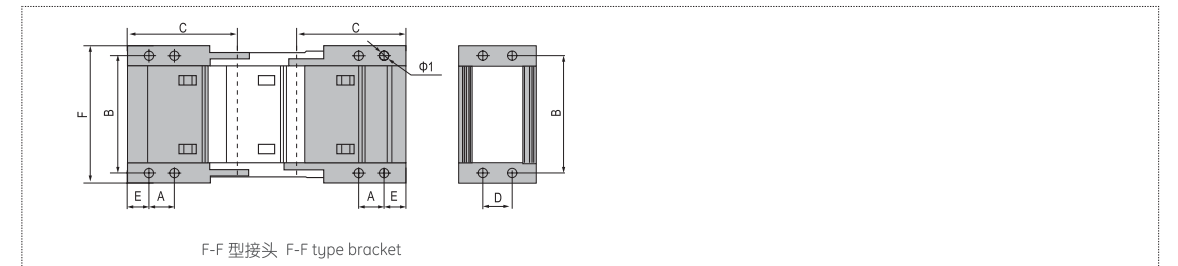
选配区 Accessories table



系列号 Series No.	内高 Hi	内宽 Bi	外高 Ha	外宽 Ba	款式 Styles	弯曲半径 Bending radius R	固定接头类型及参数 Bracket type and parameters							代号 No.	
							可配接头类型 Applicable bracket type	孔径 Bore diameter φ1	孔距 (mm)hole distance						
RD30F.1.38S	30	38	45	54	F.S	75,100,150	F-F	5.5	15	50	59	17	13	62	RD30F.1.38S-FJT
RD30F.1.50S	30	50	45	66	F.S		F-F	5.5	15	62	59	17	13	74	RD30F.1.50S-FJT
RD30F.1.57S	30	57	45	73	F.S		F-F	5.5	15	69	59	17	13	81	RD30F.1.57S-FJT
RD30F.1.60S	30	60	45	76	F.S		F-F	5.5	15	72	59	17	13	84	RD30F.1.60S-FJT
RD30F.1.75S	30	75	45	91	F.S		F-F	5.5	15	87	59	17	13	99	RD30F.1.75S-FJT
RD30F.1.77S	30	77	45	93	F.S		F-F	5.5	15	89	59	17	13	101	RD30F.1.77S-FJT
RD30F.1.100S	30	100	45	116	F.S		F-F	5.5	15	112	59	17	13	124	RD30F.1.100S-FJT

注：S 表示两侧可打开
Note: S indicates that the both side open

固定接头类型及参数 Fix bracket type and parameters (见表格 See table)



订货示例 Order Sample

示例 拖链内高 30mm、内宽 38mm、半径 75mm、长度 1米 /22 节 (Sample: inner height 30mm, inner width 38mm, radius 75mm, length 1 meter /22 links)

拖链 Chain RD30F.1.38S R75 1000mm /22 Links

接头 Bracket RD30F.1.38S -XJT 翻 (Set)

配件 Accessories

注：可根据客户要求定制各种规格。 Note: Various sizes can be customized according to customer requirements.